

# YELLOW FLAG IRIS

*Iris pseudacorus*

Iridaceae, the iris family

Category: Containment

JS. Peterson, hosted by the USDA-NRCS PLANTS Database

## FACTSHEET INFORMATION

### Summary of Invasiveness

- Yellow flag iris is an aquatic plant that inhabits the edges of rivers, lakes, ponds, and canals.
- It displaces native plants, alters soil structure, reduces stream width, disrupts water delivery and destroys important fish and wildlife habitats.
- It can survive heavy drought conditions and seed germination increases following fire.

### Description

- Aquatic perennial that grows in tight bunches up to 4 ft. tall.
- Flattened, sword-shaped leaves grow 3-4 ft. in length and resemble cattails when not in flower (yellow flag iris stems are flattened at base and have a midrib, whereas cattails have rounded stem bases, lack a midrib and can grow taller than 4 ft.).
- Flowers are showy, yellow and can have brown-purple veins at base of petal.
- Roots grow up to 1 inch in length, and have thick, pink and fleshy rhizomes.
- Rows of seeds are contained within glossy green, 3-angled, cylindrical capsules.

### Introduction and Movement

- Yellow flag iris is native to Europe and the Mediterranean region, and was likely introduced as an ornamental that escaped containment.
- It reproduces by seeds and rhizomes that are easily carried downstream with water flow.

### Prevention Strategy

- To prevent accidental introductions, learn how to identify Yellow flag iris and eradicate infestations on your property.
- When gardening, always research plants before planting and only purchase seeds from licensed nurseries.
- Dispose of unwanted vegetation by burning, composting, or drying out completely.
- Never release any water garden species into surface waters.
- Always Remember To:

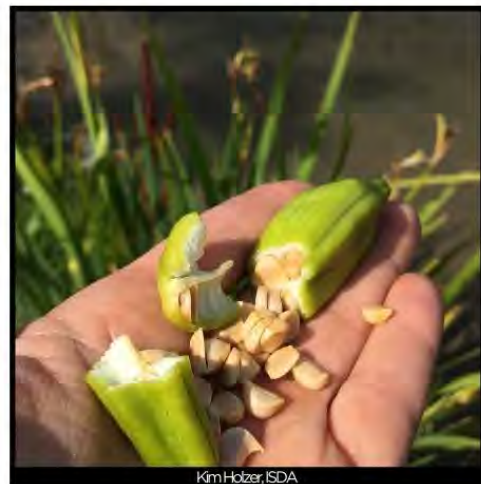
**KNOW WHAT YOU GROW!**

#### Sources

- King County Noxious Weed Control Program Best Management Practices: <https://your.kingcounty.gov/dnrp/library/water-and-land/weeds/BMPs/yellow-flag-iris-control.pdf>
- Idaho's Noxious Weeds 9th Edition, University of Idaho: <http://www.extension.uidaho.edu/publishing/pdf/BUL/BUL816.pdf>.



Nancy Loewenstein, Auburn University, Bugwood.org

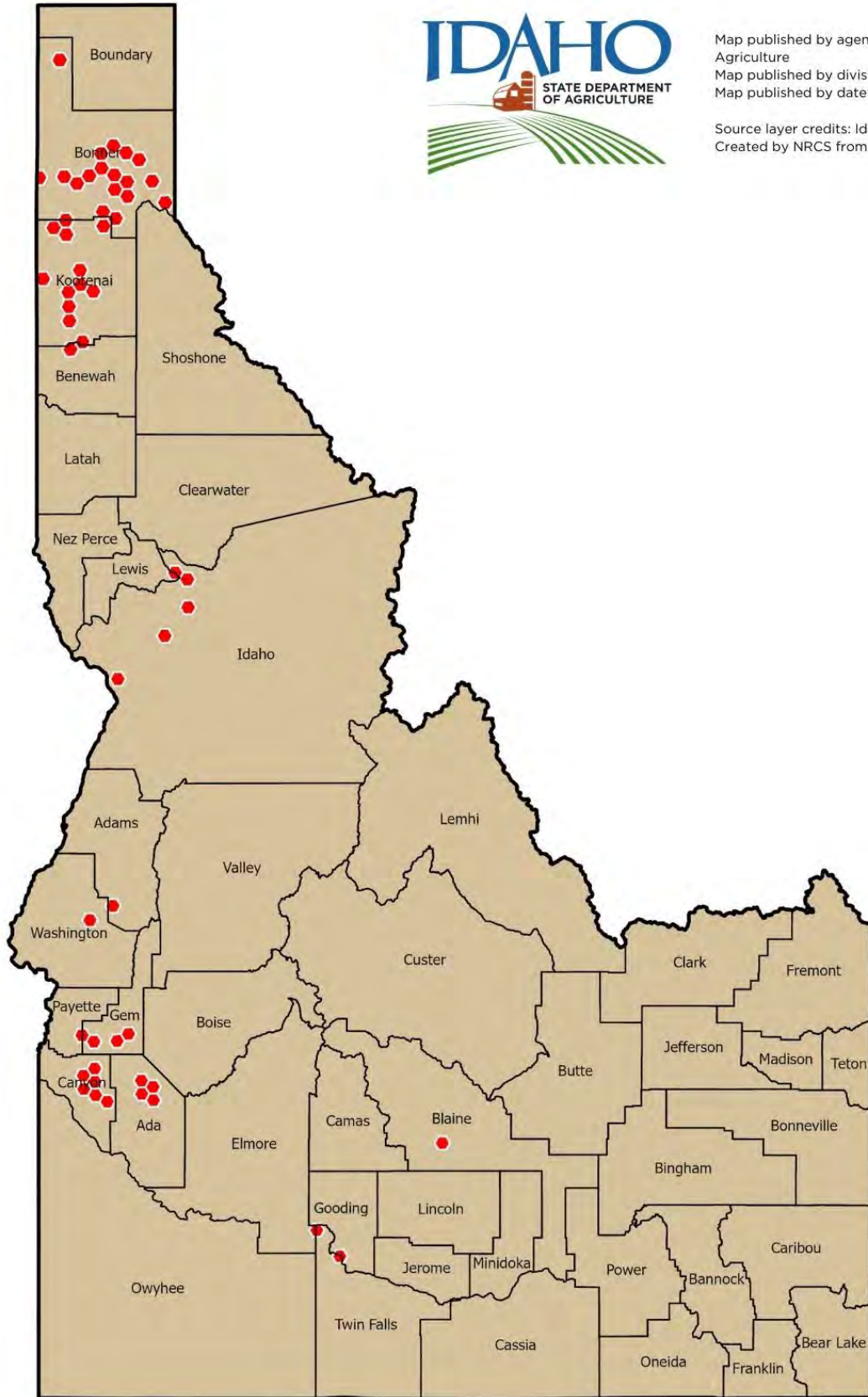


Kim Holzer, ISDA



Kim Holzer, ISDA

# YELLOW FLAG IRIS DISTRIBUTION MAP



Map published by agency: Idaho State Department of Agriculture  
Map published by division: Plant Industries  
Map published by date: May 20, 2020

Source layer credits: IdahoAGOL/Idaho\_State\_Boundary:  
Created by NRCS from 1:24,000 USGS topographic maps.