

CURLY LEAF PONDWEED

Potamogeton crispus
Potamogetonaceae, the pondweed family
Category: Containment

FACTSHEET INFORMATION

Summary of Invasiveness

- Curly leaf pondweed is a submerged, aquatic plant that forms monocultures within waterbodies, displacing native species and reducing biodiversity.
- Infestations can impede recreational activities such as boating, swimming, and fishing.
- It sprouts in late fall, growing throughout winter and summer die-off significantly reduces dissolved oxygen availability which is necessary for native species to thrive.

Description

- Submerged aquatic perennial.
- Leaves are light-dark green, linear, and wavy with fine-toothed margins.
- Small flowers arranged on terminal spikes extend above the water surface.
- Root system produces wintering buds called turions.

Introduction and Movement

- Curly leaf pondweed is native to Eurasia and was first introduced to the U.S. in Philadelphia, PA in the 1840's.
- It can inhabit rivers, streams, ponds, and freshwater and brackish lakes, and can grow in a wide range of sediments. The plant reproduces by turions and fragments, allowing it to be easily dispersed by water currents or carried on recreational equipment.

Prevention Strategy

- To prevent accidental introductions, learn how to identify curly leaf pondweed and report any sightings.
- Always research water garden plants before purchasing.
- Never release aquarium contents or water garden species into surface waters and dispose of unwanted vegetation by burning, composting, or drying out completely.
- When boating, make sure to clean off any vegetative materials when leaving each waterbody and before launching into another.
- Always Remember To: **KNOW WHAT YOU GROW**

DON'T LET IT LOOSE & CLEAN ~ DRAIN ~ DRY



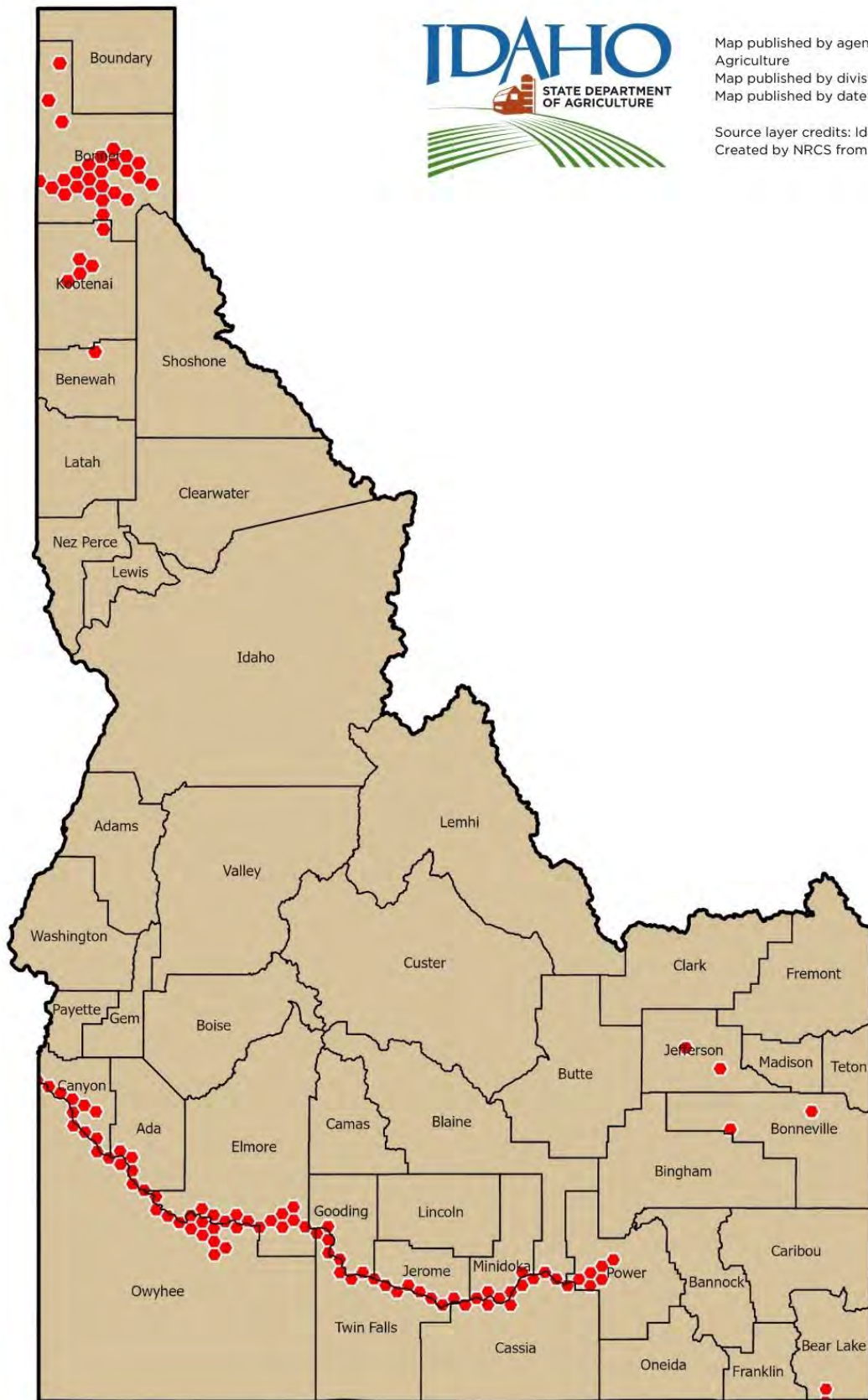
Sources

- CABI Invasive Species Compendium: <https://www.cabi.org/isc/datasheet/43664>
- Idaho's Noxious Weeds 9th Edition, University of Idaho: <http://www.extension.uidaho.edu/publishing/pdf/BUL/BUL816.pdf>.

FOR ADDITIONAL INFORMATION, PLEASE VISIT: INVASIVESPECIES.IDAHO.GOV
TO REPORT INVASIVE SPECIES IN IDAHO, PLEASE CALL 1-877-336-8676.

CURLY LEAF PONDWEED

DISTRIBUTION MAP



Map published by agency: Idaho State Department of Agriculture
Map published by division: Plant Industries
Map published by date: May 20, 2020

Source layer credits: IdahoAGOL/Idaho_State_Boundary:
Created by NRCS from 1:24,000 USGS topographic maps.