

EURASIAN WATERMILFOIL

Myriophyllum spicatum

Haloragaceae, the milfoil family

Category: Control

Kim Holzer, ISDA

FACTSHEET INFORMATION

Summary of Invasiveness

- Eurasian watermilfoil is a temperate submerged/emergent aquatic invasive that can quickly form dense monocultures in streams, rivers, lakes, reservoirs, and canals.
- Can impede water flow, decrease oxygen levels, create ideal mosquito habitat, and interfere with navigation.

Description

- Submersed perennial with delicate feather-like leaves.
- Leaves are arranged in whorls of 4 with 12 or more leaflet pairs (native milfoil species in Idaho usually have 10 or less leaflet pairs).
- Spikes develop above the water's surface and bear flowers that are small, pink, and also arranged in whorls.

Introduction and Movement

- Native to Eurasia and Northern Africa and was first discovered in the U.S. in the 1940's. It was likely introduced through the aquaria trade as an escaped/released plant.
- Reproduces primarily by plant fragments; however, it is capable of sexual reproduction and can hybridize with native myriophyllum varieties. Plant materials can easily spread downstream to establish new infestations.

Prevention Strategy

- To prevent accidental introductions, learn how to identify Eurasian watermilfoil and report any sightings.
- Always research aquarium plants before purchasing.
- Never release aquarium contents or water garden species into surface waters and dispose of unwanted vegetation by burning, composting, or drying out completely.
- When boating, make sure to clean off any vegetative materials when leaving each waterbody and before launching into another.
- Always Remember To: **KNOW WHAT YOU GROW**

DON'T LET IT LOOSE & CLEAN & DRAIN & DRY

Sources

- CABI Invasive Species Compendium: <https://www.cabi.org/isc/datasheet/34941>.
- University of Wisconsin: <http://www.seagrant.wisc.edu/Home/Topics/InvasiveSpecies/Details.aspx?PostID=532>
- Idaho's Noxious Weeds 9th Edition, University of Idaho: <http://www.extension.uidaho.edu/publishing/pdf/BUL/BUL816.pdf>.



Kim Holzer, ISDA



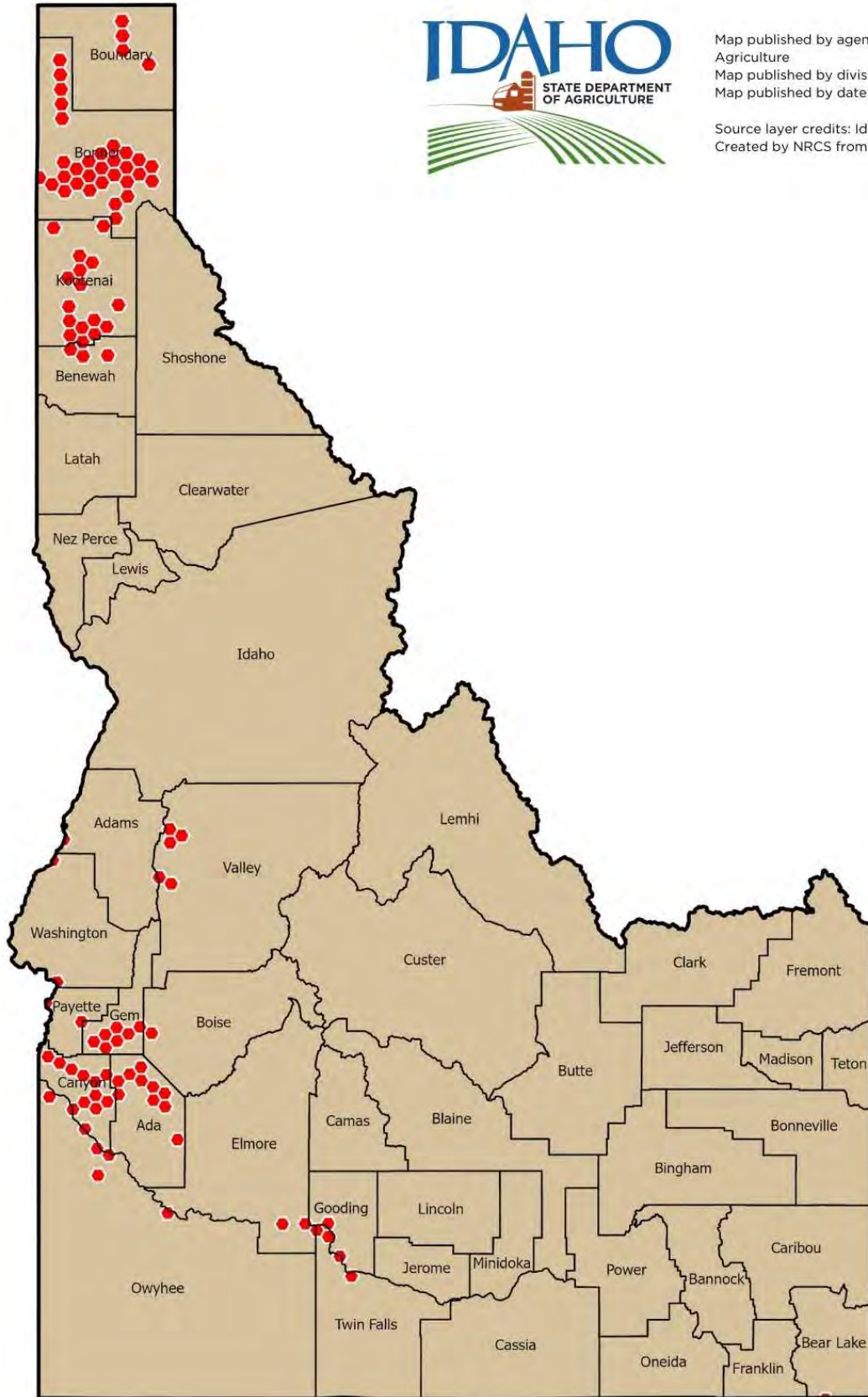
Idaho State Department of Agriculture



Alison Fox, University of Florida, Bugwood.org

FOR ADDITIONAL INFORMATION, PLEASE VISIT: INVASIVESPECIES.IDAHO.GOV
TO REPORT INVASIVE SPECIES IN IDAHO, PLEASE CALL 1-877-336-8676.

EURASIAN WATERMILFOIL DISTRIBUTION MAP



Map published by agency: Idaho State Department of Agriculture
Map published by division: Plant Industries
Map published by date: May 20, 2020

Source layer credits: IdahoAGOL/Idaho_State_Boundary:
Created by NRCS from 1:24,000 USGS topographic maps.